

TUSK FULL GLASS WINDSHIELD PART #1824330024

Thanks for your purchase of the Tusk Full Glass Windshield for your Polaris XP 1000. Please note the information and instructions below to get the most out of your Tusk Full Glass Windshield.



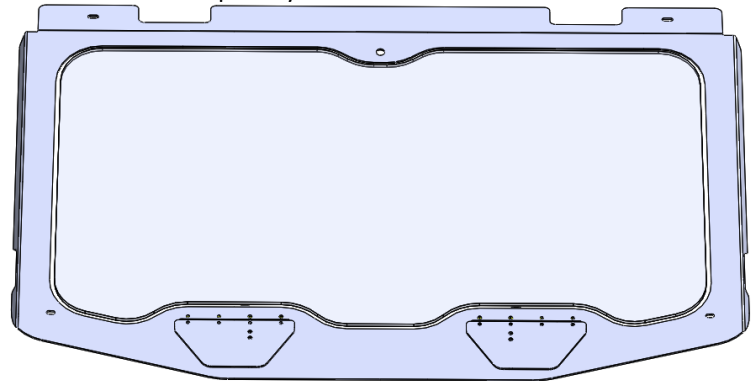
Assembly: *Before you throw any packaging away, make sure you received of all of the necessary hardware*

INSTALLATION INSTRUCTIONS AND INFORMATION

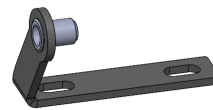
Hardware:	QTY:
Glass Windshield	1
Loop Clamp	2
Vent A	2
Vent B	2
Vent C	2
M6 Hand Knob	2
Friction Washer	2
M6x16mm Button Head Bolt	10
M6 Nyloc Nut	10
M6 Nyloc Flange Nut	2
M6x25mm Button Head Bolt	2
M6 Washer	2
Filler Panel Spacer	2
M8x30mm Button Head Bolt	2
M8 Nyloc Nuts	2
M8 Washer	2
16" Windshield Wiper	1
48" Bulb Trim	1
24" Thick Foam Tape	2
34" Thick Foam Tape	1
34" Thin Foam Tape	1
12" Skinny 1/8" Thich Foam Tape	2

Vehicle Fitment:	
RZR XP 1000	2024+
RZR XP 4 1000	2024+

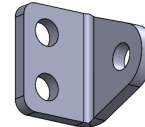
Note: All trim and tape may need to be trimmed to fit as needed.



Glass Windshield



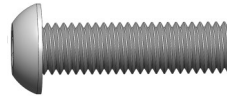
Vent A



Vent B



Vent C



M8x30mm Button Head Bolt



M6 Hand Knob



Bulb Trim



Loop Clamp



Filler Panel Spacer



Friction Washer



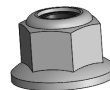
M6 Nyloc Flange Nut



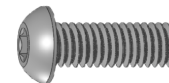
M6 Nyloc Nut



M6 Washer



M8 Nyloc Flange Nut



M6x16mm Button Head Bolt



M8 Washer



M6x25mm Button Head Bolt



Foam Tape



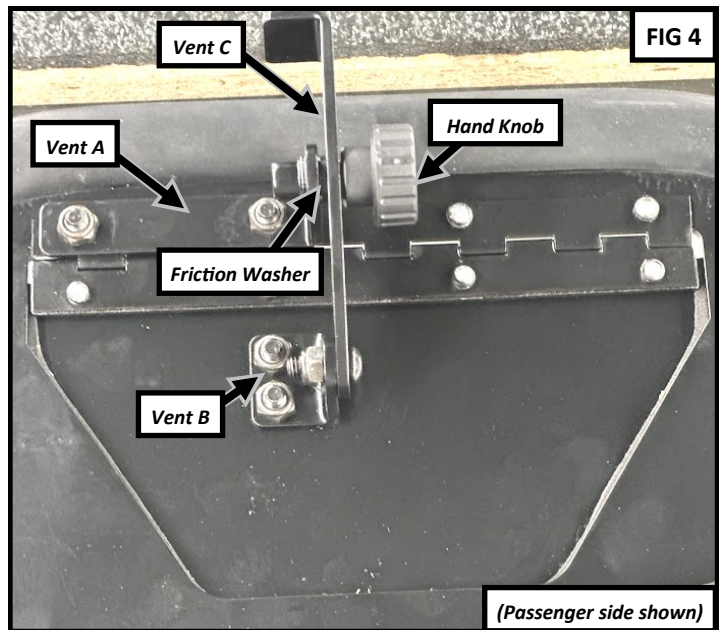
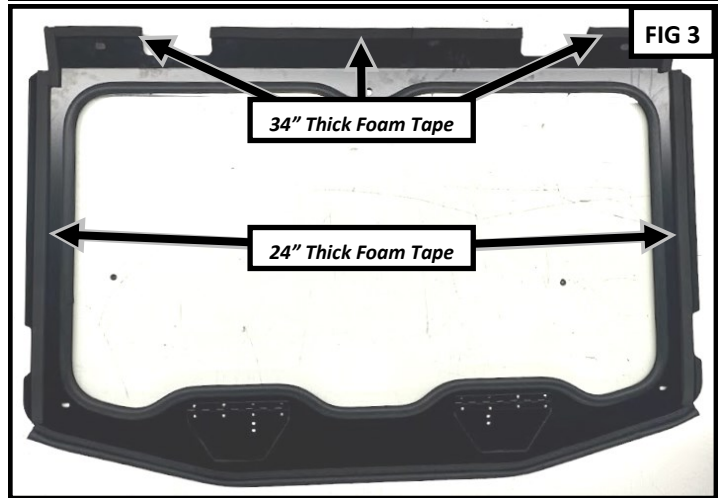
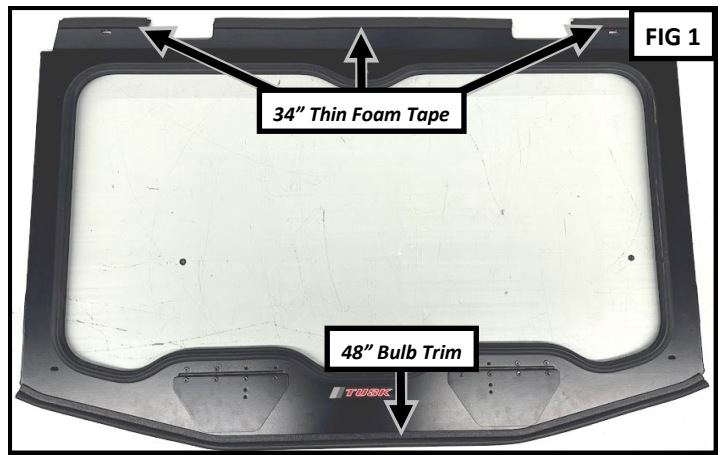
16" Wiper Kit

Installation Instructions:

1. Start installation by loosening or removing the front of the roof so that it can be lifted up.
2. Remove or loosen any other accessories that may interfere with the installation (mirrors, lightbars, etc.). These can be reinstalled later.
3. Install a **LOOP CLAMP** onto each A-Pillar. The flat side of the loop clamp should face inside. Let slide down the A-Pillar for now.

TUSK FULL GLASS WINDSHIELD

- Set the **GLASS WINDSHIELD** on a flat clean surface. Place so that the folded edges are down (Tusk logo up). Stick the **34" THIN FOAM TAPE** onto the top of the windshield. You will need to cut the tape for the roof bracket slots as shown in **FIG 1**.
- Stick the **48" BULB TRIM** onto the bottom of the window. The bulb should face down. Use heavy-duty scissors or side cutters to trim to length if needed. **FIG 1**
- Stick the **12" SKINNY FOAM TAPE** onto the perimeter of the vent door. Repeat for the other vent door. **FIG 2**
- Flip the windshield over (Tusk logo down).
- Stick the **24" THICK FOAM TAPE** onto each side of the windshield next to the folded edge. **FIG 3**
- Similar to **STEP 4**, stick the **34" THICK FOAM TAPE** onto the top edge of the windshield. **FIG 3**
- Locate **(2) VENT A, (2) VENT B, (2) VENT C, (2) M6 FRICTION WASHER, (2) HAND KNOB, (10) M6X16MM BUTTON HEAD BOLTS, (10) M6 NYLOC NUT**.
- Attach **VENT A** to the window frame. The arm should be oriented out, away from the center of the machine. Align the two holes with the two empty holes along the filler. Use the **(2) M6X16MM BOLTS** and **(2) M6 NYLOC NUTS** to attach. Leave bolts slightly loose. **FIG 4**
- Attach **VENT B** to the two holes in the vent using **(2) M6X16MM BOLTS** and **(2) M6 NYLOC NUTS**. The flange should face out from the center of the machine. **FIG 4**
- Using **(1) M6X16MM BOLT** and **(1) M6 NYLOC NUT**, connect **VENT C** to **VENT B**. Do not over-tighten. If the vent has a difficult time opening and closing then slightly loosen this pivoting bolt. **FIG 4**
- Use the **M6 HAND KNOB** and connect the channel of Vent C to the threaded insert in Vent A. Place the **FRICTION WASHER** in-between Vent A and Vent C. Once alignment is good between all vent parts tighten all remaining bolts. **FIG 4**
- Repeat vent installation for the other side.



TUSK FULL GLASS WINDSHIELD

16. Set the windshield onto the roll cage and let slide down the A-pillars until the Bulb Trim sits against the bottom of the window channel.
17. Pass an **M6x25MM BUTTON HEAD BOLT** through an **M6 WASHER**, the lower bolt holes in the **WINDOW FRAME**, both sides of the previously installed loop clamp, and secure with a **M6 NYLOC FLANGE NUT**. Repeat for the other loop clamp. Leave it slightly loose for now. **FIG 5**
18. Pass an **M8x30MM BUTTON HEAD BOLT** through an **M8 WASHER**, the top hole of the windshield, the **FILLER PANEL SPACER**, the gusset in the roll cage frame, and secure with a **M8 NYLOC FLANGE NUT**. The spacer should be in-between the gusset and the windshield to hold the windshield at the correct height. Leave it slightly loose for now. Repeat for the other side. **FIG 5**
19. Adjust the windshield up/down and side/side and tighten all of the mounting hardware. The bottom bulb seal should make contact with the body to create a tight seal.
20. Remove the plastic plug from the windshield wiper hole.
21. Install the wiper hardware through the windshield wiper hole. Do not over-tighten. **FIG 6 and 7**
22. Periodically check all hardware for tightness.

Enjoy the use of your new Tusk Full Glass Windshield!

